

EXPLANATION OF PLATE XLIII.

HOUSEHOLD BOX; ALSO USED AS A DEPOSITORY FOR THE CREMATED ASHES OF THE DEAD.

Fig. 242. CEDAR BOX. Totemic design, Hoorts, the bear. The lid is made of a slab of wood beveled on the under side to fit over the box. The sides are made of two pieces, one being the end and the other a single piece bent twice at right angles to form the two sides and the other end. There is very little appearance of breaking at the two corners. The joints at the other two corners are pegged together. The bottom is made of a separate piece of wood, so that altogether there are four pieces used in the construction of the box. This type, besides being used for various household purposes, is also the kind used among the Tlingit as a depository of the ashes of the dead. Cat. No. 74755, U. S. N. M. Haida Indians, Queen Charlotte Islands, British Columbia. Collected by James G. Swan.

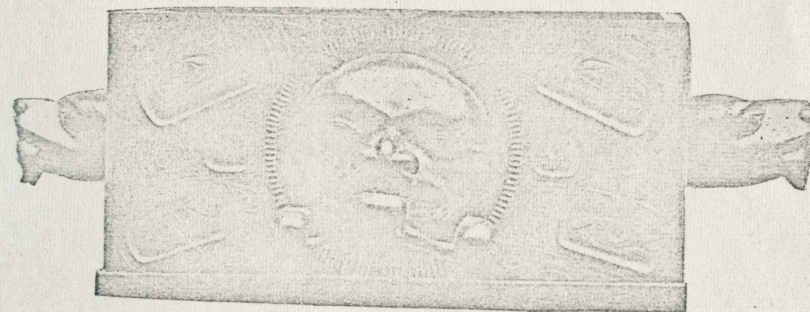


HOUSEHOLD BOX; ALSO USED AS A DEPOSITORY FOR THE CREMATED ASHES OF THE DEAD.

EXPLANATION OF PLATE XLIV.

HAIDA CARVED BOX OF BLACK SLATE, QUEEN CHARLOTTE ISLANDS, BRITISH COLUMBIA.

Fig. 243. CARVED BOX. Of black slate. On the lid, a top view of which is shown above the box, two figures or faces may be seen. The upper one with the rows of teeth and protruding tongue is Hoorts, the bear. The two small oblong figures, one in each upper corner, represent the ears of the bear; the lower figure on the lid the face and flippers of Kye, the sea-lion; also seen in the handles on each side of the box. In the latter the sea-lion has in his mouth the salmon. The face on the side of the box is that of Hoorts, the bear, having in his mouth the hunter. This legend is explained in Chap. VII. The oblong figures in each corner are the paws of the bear. It should be mentioned here that in the Haida drawings an eye is placed in the breast, in the ear, paw, tail, etc., of figures, presumably on the belief that each member of the body has the power of looking out for itself or controlling its own movements. Cat. No. 89000, U. S. N. M. Haida Indians, Queen Charlotte Islands, British Columbia. Collected by James G. Swan.



HAIDA CARVED BOX OF BLACK SLATE, FROM QUEEN CHARLOTTE ISLANDS, BRITISH COLUMBIA.