

Anthropomorphic Eye Types and Subtypes

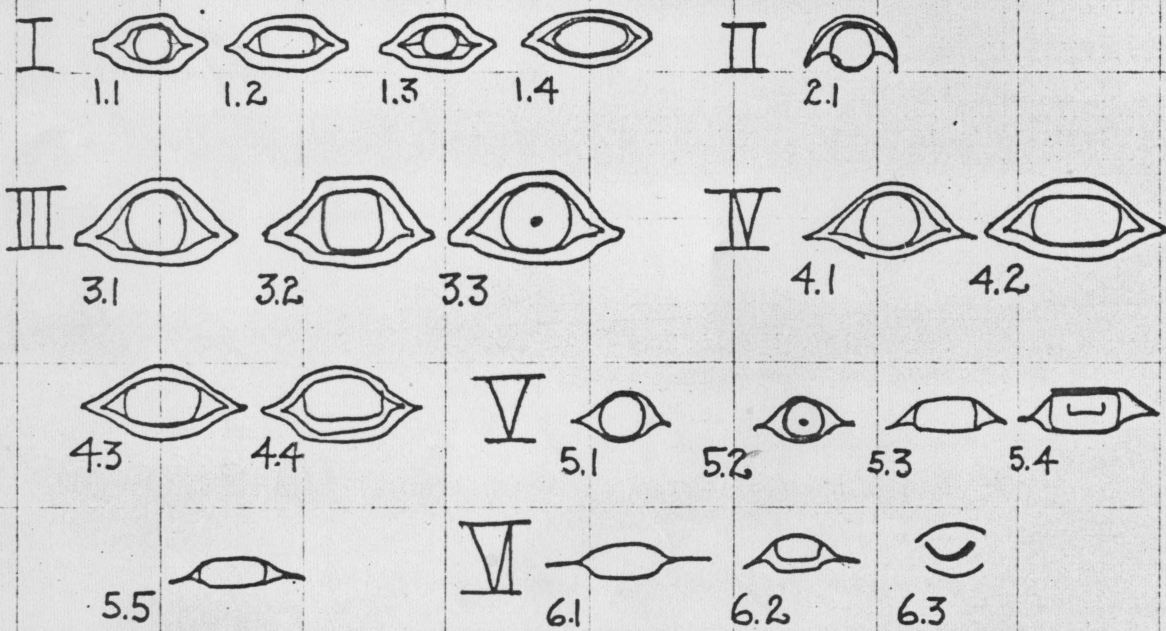
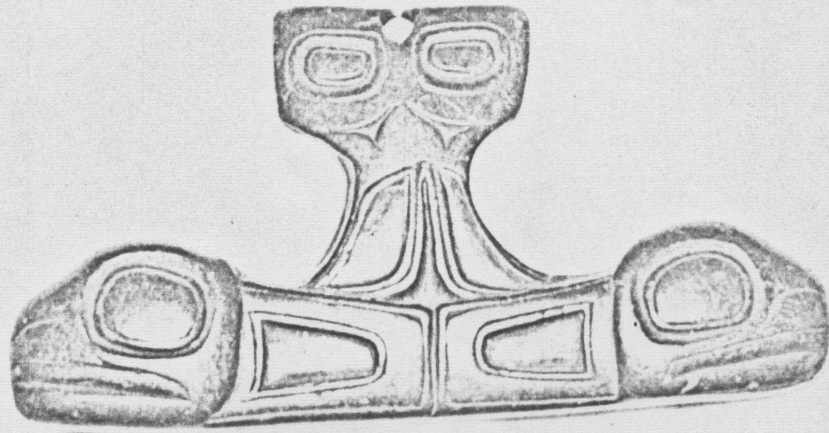


Figure 3-5

4-1



4-3

	oval pipe panel	pipe panel	pipe figure	figure group	carved figure group	house post	totem pole	bowl	dish	platter	flute	cup	box
1900			3	17	7		21	3	7	39			
1890		1	11	14	13		39	1	8	8			5
1885		2	4	2	29		40		2	16			4
1880					2		64	7	11	2			12
1870				2	2	51	39		5				
1865	7	14	7	27	7	14	14	3	7				
1860	3	33	10						29	6	3		16
1850	15	15	22						30		15		
1840	4	13	25		29				25	4			
1830	16	74		7									
1820	31	53			5				11				

117

FIGURE 3-10
% DISTRIBUTION OF FUNCTIONAL PROTOTYPES

CHRONOLOGICAL DISTRIBUTION
OF
ANTHROPOMORPHIC EYE TYPES

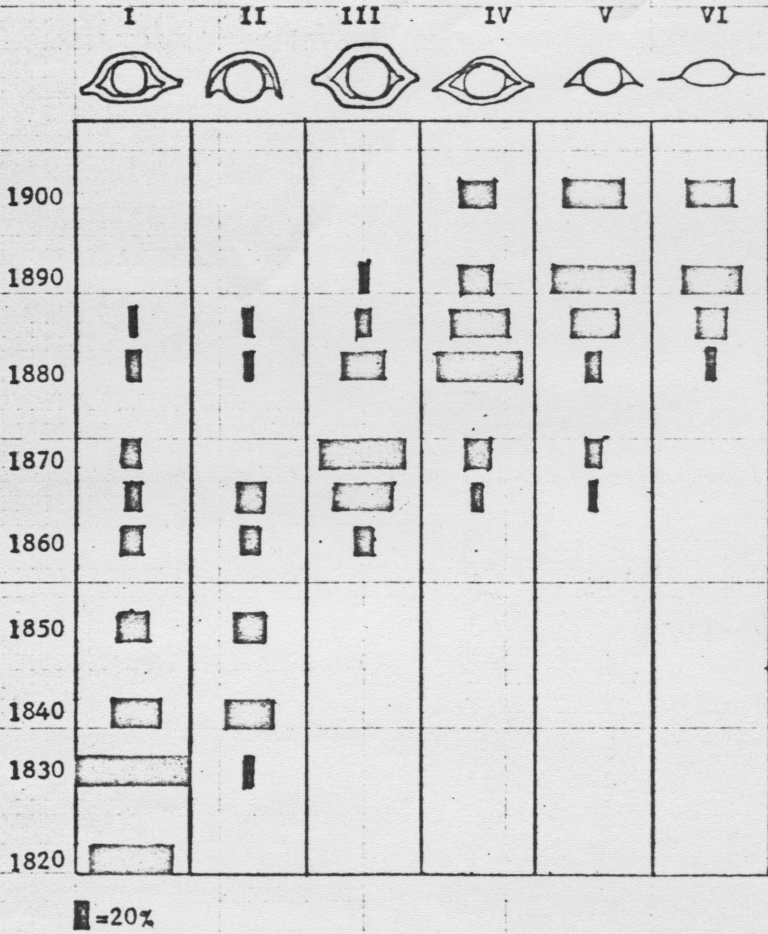
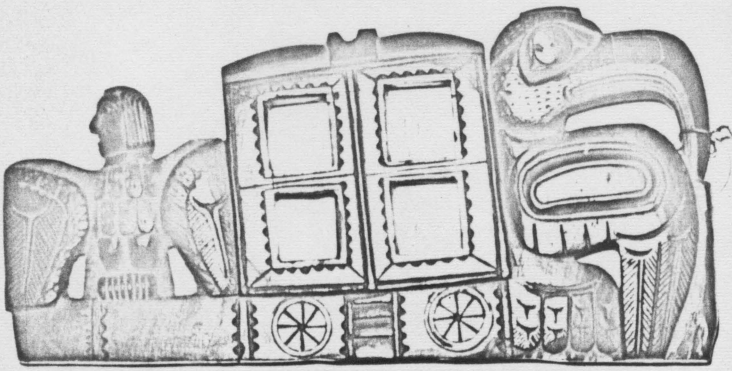


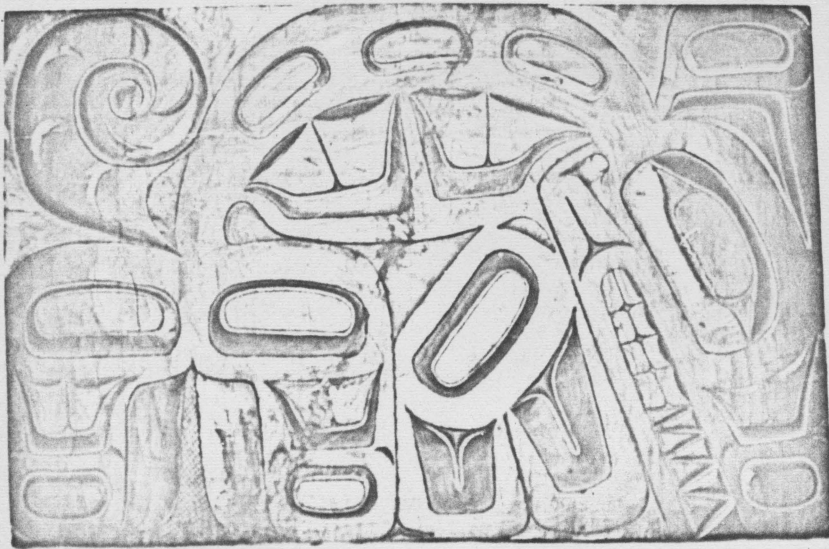
FIGURE 3-7.

Apr-1821

4-2

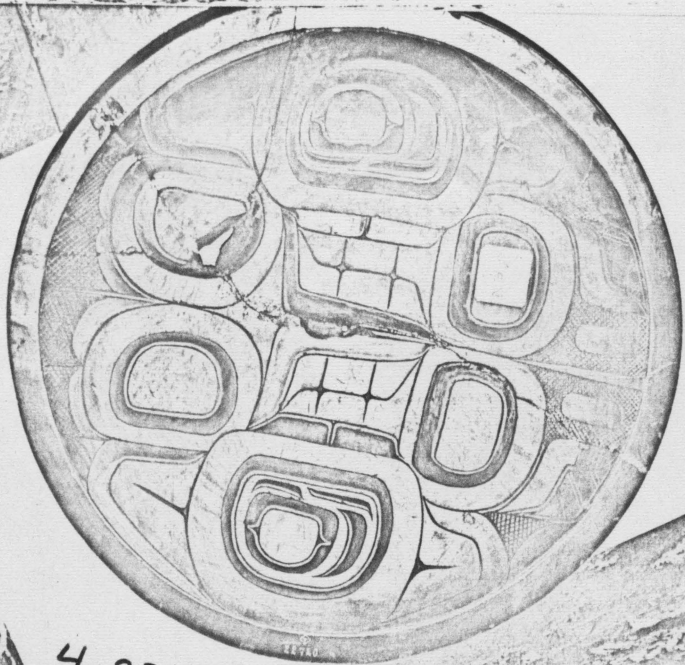


4-24



4-32

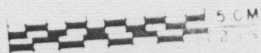
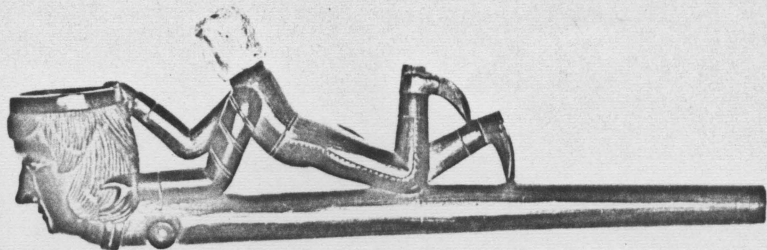




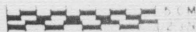
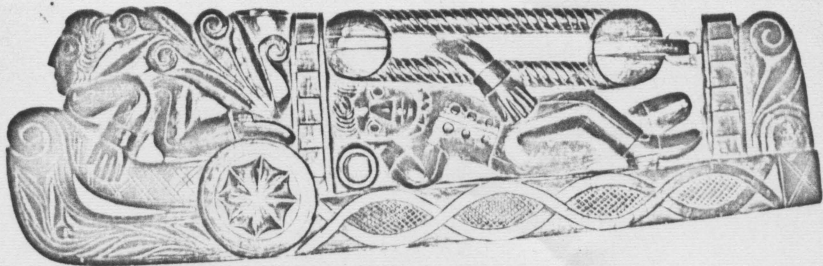
4-23



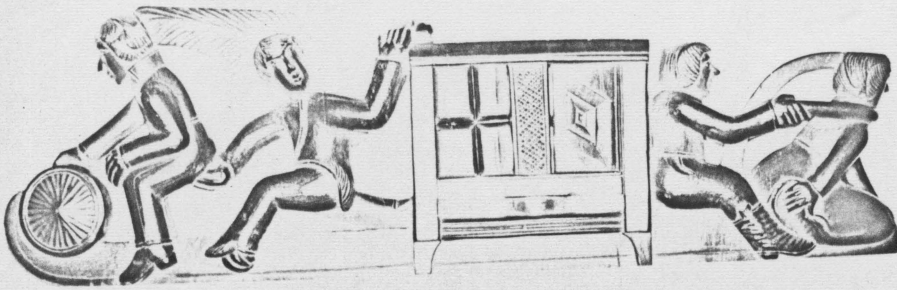
46



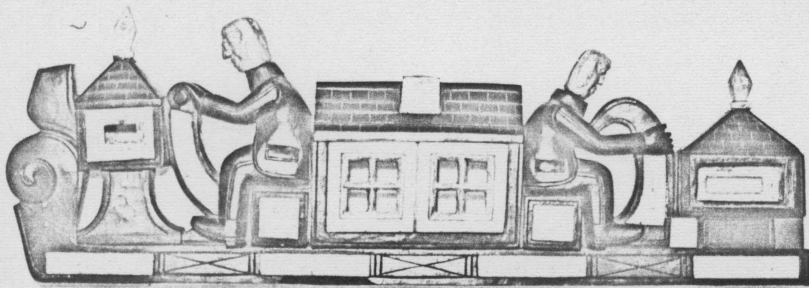
4-19

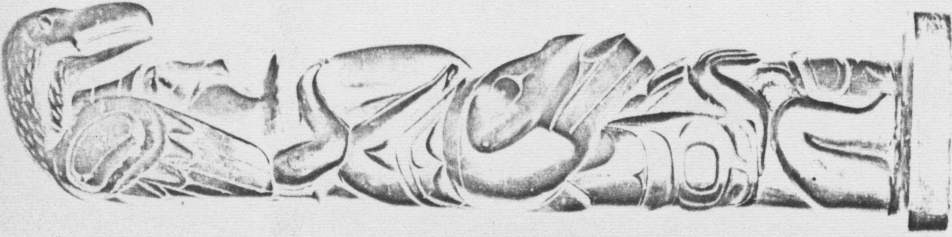


4-18

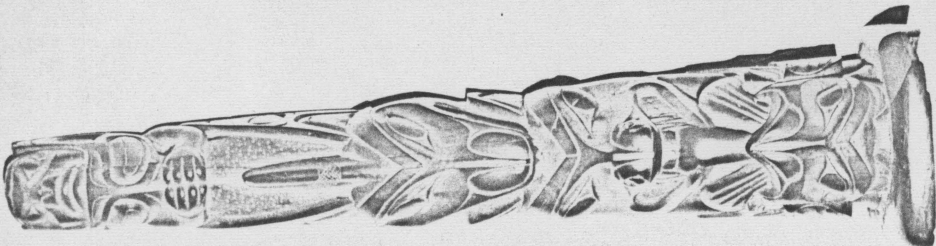


4-14

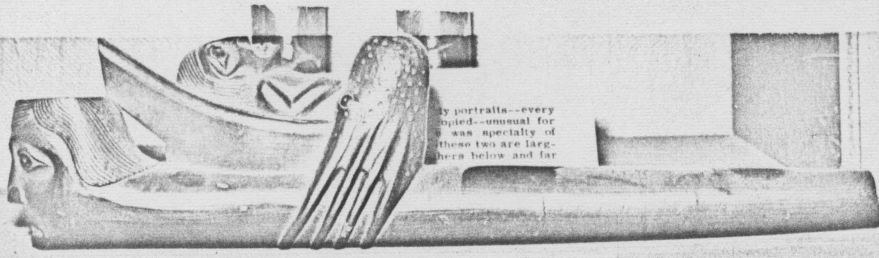




4-44



4-45



by portraits—every
copied—unusual for
an specialty of
these two are larg-
hera below and far